



**FIRE DEPARTMENT MURAL**  
700 2nd Street

The Chillicothe Fire Department mural features historic scenes from 1886 to the 1920s. Chillicothe has a tradition of possessing an effective fire fighting department and the scenes in this mural depict the department's equipment and operation over the early decades of its existence as a part of city government. The team of horses, Joe & Dan, set the world's record in 1898 for their speed in responding to a fire.



**BRICK PLANT MURAL**  
619 Elm Street

This 3-dimensional mural was designed by Sherwood Patek whose family owned and operated Midland Tile & Brick for over 35 years. The Brick Plant was operational until the late 1900's. It is a unique mural with layers of texture as well as rich in area history.



**OUTDOOR MURAL**  
801 Elm Street

This unique 2-sided mural illustrates Livingston County's rich connection with the outdoors. Take the time to explore the different elements that combine to make this mural native to the area. The blue heron, wild turkey and bobcat blend in with their painted background of the Grand River and surrounding landscape. The bridge portrayed in the background was a major key in the success of the Pony Express as mail was transported to St. Joseph on the Hannibal & St. Joseph Railroad that crossed that very bridge.



**GIRL SCOUT/YOUTH MURAL**  
327 Washington Street

"Kids Throughout the Decades" is the theme that four local Girl Scout troops selected for this mural that served as their Gold Award Project. The *scrapbook* style mural features pictures from the area to show how kids lived and played during the 1800s through the 1930s. All of the photos were chosen due to their special significance in the history of the Girl Scouts.



**ANDERSON TIRE MURAL**  
801 Locust Street

This rehabilitated "ghost sign" represents the early 1900s inhabitant of the now Anderson Tire Co. building. A. Lowenstein Mercantile Company was purveyor of wholesale eggs, wool, and other farm produce purchased from Livingston County farmers.



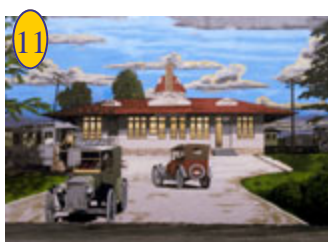
**ORIGINAL ARTWORKS BY KELLY**  
443 Locust Street

This mural is the former 500 block of Locust Street and depicts the "New York Store". This Chillicothe mainstay was built in 1886, handling all of Chillicothe's dry goods and serving as one of north Missouri's finest establishments for purchasing ornate hats, caps, gloves and robes as well as other necessary household items.



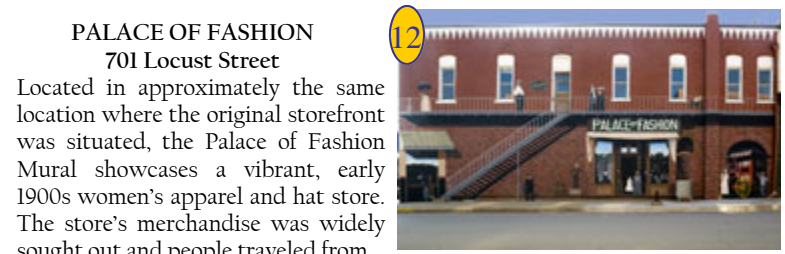
**RAILROAD MURAL**  
724 Locust Street

Chillicothe was a point of convergence for three railroads serving northern Missouri: Burlington, Wabash, and later the Milwaukee Road. This mural includes a scene of a steam engine traveling the local countryside in the last years of the 1890s. The railroad company logos represent the lines that served Chillicothe since 1857.



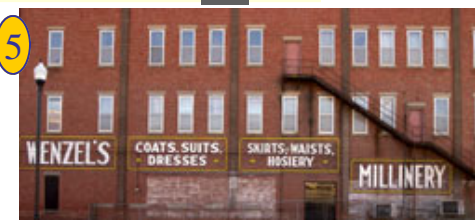
**TRANSPORTATION MURAL**  
708 Locust Street

Created from an original painting by Fred Irvin, this scene portrays a pre-World War I Chillicothe setting. The Milwaukee Depot (demolished in 1977) serves as the backdrop for period vehicles and a drawn streetcar used to transport patrons to the station.



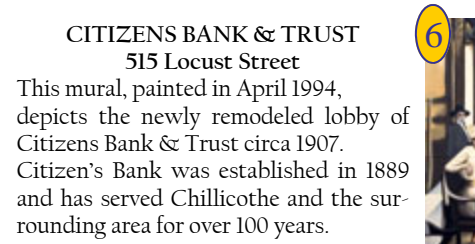
**PALACE OF FASHION**  
701 Locust Street

Located in approximately the same location where the original storefront was situated, the Palace of Fashion Mural showcases a vibrant, early 1900s women's apparel and hat store. The store's merchandise was widely sought out and people traveled from miles away to purchase new goods. The mural itself is a piece of work. Using the French technique of *trompe-l'œil* (trick the eye), this mural entertains the illusion of the once existent upper level staircase and balcony. Onlookers enjoy trying to pin point what is real and what is art. Try your eye!



**WINKELMEYER MURAL**  
455 Locust Street

This recreation of an earlier "ghost sign" harkens back to previous occupants of the building circa the 1920s. The building has had many uses including a hotel, barber shop, pool hall, lawyer's offices, a grocery store, a furniture store, a women's dress store, an undertaker's parlor, millinery, and brothel.



**CITIZENS BANK & TRUST**  
515 Locust Street

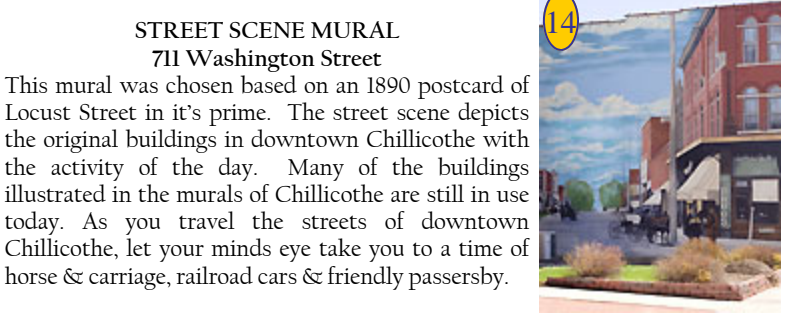
This mural, painted in April 1994, depicts the newly remodeled lobby of Citizens Bank & Trust circa 1907. Citizen's Bank was established in 1889 and has served Chillicothe and the surrounding area for over 100 years.



**SLICED BREAD MURAL**  
709 Washington Street

Perhaps Chillicothe's most sought out mural, this lively scene of historic Locust Street is adorned with the logo of Chillicothe's claim to fame as the *Home of Sliced Bread*. The first mechanized bread slicing machine, invented by Otto Rohwedder, was used on July 7, 1928 at the Chillicothe Baking Company owned & operated by Frank Bench. This life altering invention proved to be a great success with a 2,000% increase in bread sales within the first week of its debut. And as they say... the rest is history!

Baking Company owned & operated by Frank Bench. This life altering invention proved to be a great success with a 2,000% increase in bread sales within the first week of its debut. And as they say... the rest is history!



**STREET SCENE MURAL**  
711 Washington Street

This mural was chosen based on an 1890 postcard of Locust Street in it's prime. The street scene depicts the original buildings in downtown Chillicothe with the activity of the day. Many of the buildings illustrated in the murals of Chillicothe are still in use today. As you travel the streets of downtown Chillicothe, let your minds eye take you to a time of horse & carriage, railroad cars & friendly passersby.



**AGRICULTURAL MURAL**  
718 Washington St.

The Ag Mural portrays an early 20th Century harvest season, complete with the "Jenkins Hay Rake" which was designed, built & sold in Chillicothe, MO. The Jenkins Hay Rake was an early labor saving device that helped to revolutionize agricultural production in the late 1800s and early 1900s. The mural is accented with a steam powered tractor, old threshing machine, log cabin, red wood barn and covered wagon.

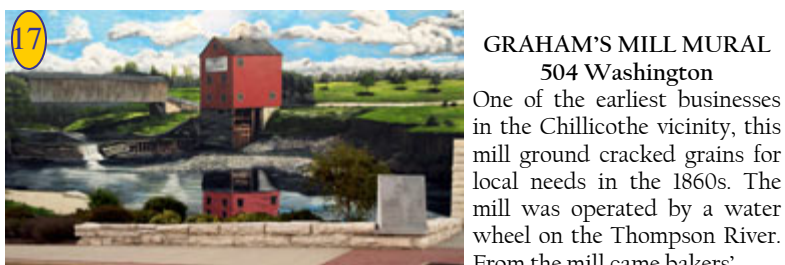
The Jenkins Hay Rake was an early labor saving device that helped to revolutionize agricultural production in the late 1800s and early 1900s. The mural is accented with a steam powered tractor, old threshing machine, log cabin, red wood barn and covered wagon.



**CHILLICOTHE BUSINESS COLLEGE MURAL**  
710 Washington Street

Chillicothe was the home to the Chillicothe Business College from 1890 through the early 1950s. The College developed a campus on Chillicothe's northwest side and offered a variety of professional and occupational training programs for a student body of over 1,000.

Graduates still fondly remember seeing advertisements that spanned from Missouri to California that calculated the number of miles to the CBC.



**GRAHAM'S MILL MURAL**  
504 Washington

One of the earliest businesses in the Chillicothe vicinity, this mill ground cracked grains for local needs in the 1860s. The mill was operated by a water wheel on the Thompson River. From the mill came bakers'

flour as well as feed for livestock. Water power fell out of use in the late 1800s, Graham's Mill ceased operation by 1910 and was torn down in the 1940s. The covered bridge collapsed in 1944.

Welcome to... *Main Street Chillicothe* A CIDC Initiative *Enjoy your tour!*



**STREET SCENE MURAL**  
108 Washington Street

This mural depicts Webster Street on the north side of the square in downtown Chillicothe circa 1916. Webster Street was well traveled by visitors arriving and departing from the Milwaukee depot on the east end of town who might have traveled by the Bus, Baggage & Transfer Line operated by Ishmael & Allen. Many of the buildings in the mural are still used by downtown businesses.



# Main Street Chillicothe Downtown Sponsors

## Specialty

Anderson TBA  
Ballet Arts Dance Studio  
Beemer's Mens Apparel  
Chillicothe Beauty Academy  
Chillicothe Martial Arts  
Friends Womens Apparel & Home Decor  
Hearing Unlimited  
Lauhoff Jewelry LLC  
Murphy's Photography  
Original Artworks by Kelly  
Parks' Shoes  
Pure N Simple Health Food Store  
Sensenich Jeweler  
The Clipper Hair Salon  
Walker Embroidery & Advertising Specialists

## Financial

America's Cash Advance  
Chillicothe State Bank  
Citizen's Bank and Trust  
Edward Jones  
Investors National Bank  
Wells Fargo Home Mortgage

## Services

Hometown Pharmacy  
Livingston County Library  
Livingston County Title  
Richard's Pack and Ship  
Staton Abstract & Title  
Time Warner Cable

## Offices

Alaska House  
American Family Insurance  
City of Chillicothe City Hall  
Habiger Management  
Law Office of Scott Washburn  
Livingston County Courthouse  
Roberts Law office  
Robertson Insurance  
SkillPath Seminars  
Summerville Insurance

## Media

Ad Page  
KCHI Radio

See what  
Downtown Chillicothe  
has to offer you!



**Lauhoff Jewelry**  
Fine Jewelry • Diamonds • Gifts  
Jewelry Repair • Custom Engraving

**Ken & Brenda Lauhoff**  
Good for one free ring cleaning

620 Washington Street  
Chillicothe, MO 64601  
email: brenda@lauhoffjewelry.com  
ken@lauhoffjewelry.com

(660) 646-3504  
1-800-559-3504  
Fax: (660) 646-3512

www.lauhoffjewelry.com

**Piece of Cake**  
Cafe, Bakery & Catering

Cheri Livingston & Hollie Caselman  
Owners

- Breakfast & Lunch Cafe
- Made-to-Order Bakery
- Coffee Bar
- Event Catering

422 Washington Street  
660.646.CAKE  
Open Monday thru Friday  
Hours: 8am-2pm

Stop by on your mural walk for some eats, sweets, and small town talk!

**Sensenich Jeweler**

660-646-3161  
www.sensenichjeweler.com

Come in for *Something Sweet* and we will make you *Sparkle!*  
Good for a **FREE** jar of jewelry cleaner.

**Hometown Pharmacy**  
YOUR RX FOR HEALTH

- Professional
- Personal
- Prompt

Come visit our **Historic Pharmacy**  
Dating back to 1890

601 Locust St.  
Chillicothe, MO  
646-PILL(7455)

**Boji Stone**  
coffee House & Cafe

- ★ Gourmet Coffee
- ★ Smoothies
- ★ Quiche
- ★ Pasta
- ★ Salads
- ★ Sandwiches
- ★ Wraps
- & Much More!!

Purchase Any Latte or Cappuccino & Get **Free Biscotti** with this ad!!!

612 Washington Street  
Across from Courthouse on West Side

# Mural Map of Downtown Chillicothe

walk.  
explore.  
reminisce.



**Main Street Chillicothe**  
PO Box 1022  
514 Washington Street  
Chillicothe, MO 64601  
660.646.4071

## Meet the Artist...

Kelly William Poling, a resident of Chillicothe, Missouri, is a super realist extraordinaire. Originality and creative ideas are special gifts which he has adapted to the requisites of others. Reproduction and enlargement of photographs is a specialty of Poling's so when the first historic mural of Chillicothe was commissioned, he was the top pick. Fifteen murals and two ghost signs later... Kelly is still providing the Chillicothe area with beautiful, larger-than-life renditions of days gone by. In addition to his local notoriety, Poling has also had many of his works displayed in the MGM and Palace Station Casinos in Las Vegas, Nevada where he resided for two years and has had works displayed at the Joslyn Art Museum in Omaha, Nebraska. Kelly, his wife, Angela, son, Gabriel, and daughter, McKenna, have resided in Chillicothe since November 1997. Family is a big part of Poling's work. See if you can spot his family members' names hidden in the murals. Kelly and Angela are co-owners of the Original Artworks by Kelly Art Gallery in Chillicothe. In addition to the display of his art, he custom mats and frames artwork. To get an Original Artwork by Kelly, please call (660) 646-6451 or come by 443 Locust Street in Chillicothe from 9:00 a.m. to 5:00 p.m., Monday through Friday. His artworks are possessions you will treasure for the rest of your life. So don't miss out!



## Behind the Murals...

*"Vision: The first step toward creating an improved future is developing the ability to envision it."*

-Author Unknown-

In the mid 1990s, the Chillicothe Development Corporation began to focus on Downtown Chillicothe. They saw the need to bring commerce and tourism back to the heart of the community. Through their own personal travels, they found that a unique way to transform the streetscape of a community was through artistic renderings on barren walls. After additional research, the first mural was commissioned of the Chillicothe Business College at 710 Washington followed by the Grahams Mill Mural at 504 Washington. The significant paintings not only dressed up the scenery but also began drawing in people from out of town leading to a boost in tourism. The initial vision has grown to include 15 murals and draws in more people each passing year. Let our murals rekindle thoughts of days gone by, simpler times and wonderment of how life once was in the City of Chillicothe.

## Downtown Chillicothe Annual Events

Farmers' Market  
Mrs. Missouri Pageant Parade  
Lion's Club Cruise Night  
Strum & Stroll  
Kiwanis's Kids Day Parade  
Boofest  
Chamber of Commerce Holiday Parade  
Community Christmas Tree Lighting  
Downtown Holiday Events